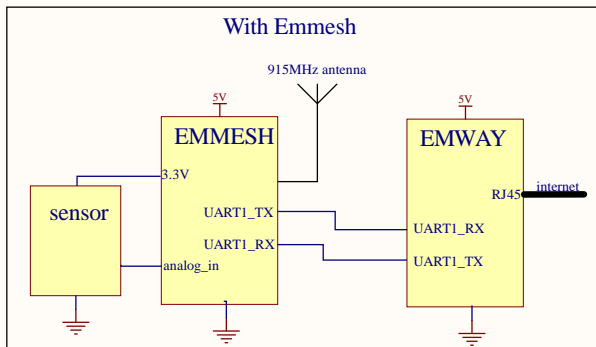
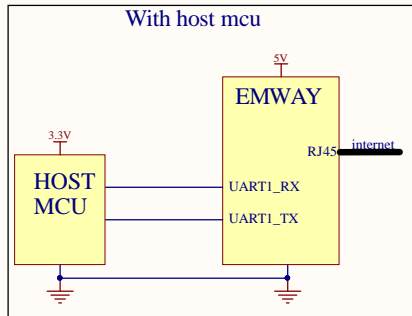


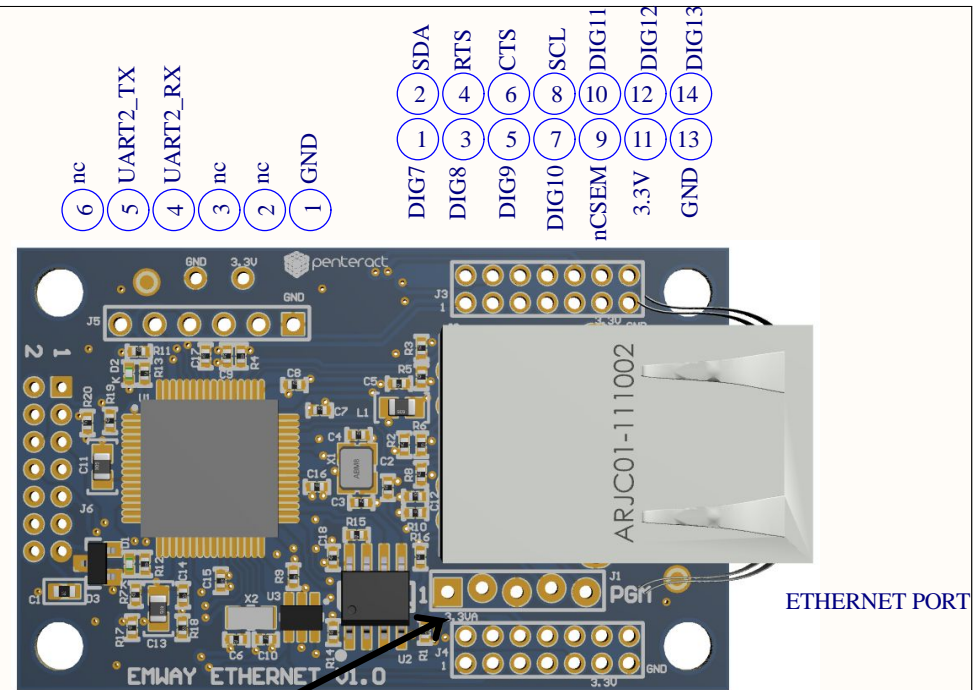
EMWAY/ETHERNET

Hardware Connections



- SCL (2) (1) GND
- SDA (4) (3) nc
- RTS (6) (5) UART1_TX
- UART1_RX (8) (7) CTS
- nCSEM (10) (9) SDI
- SDO (12) (11) nc
- SCK (14) (13) 3.3V

SCL	I2C serial clock Multipurpose I/O PWM output
SDA	I2C serial data Multipurpose I/O PWM output
RTS	Multipurpose I/O
CTS	Multipurpose I/O
UART1_RX	UART1 receiver Multipurpose I/O
UART1_TX	UART1 transmitter Multipurpose I/O
UART2_RX	UART2 receiver PWM output Multipurpose I/O
UART2_TX	UART2 transmitter PWM output Multipurpose I/O
nCSEM	Multipurpose I/O
SDI	SPI serial data in
SDO	SPI serial data out
SCK	SPI serial clock
DIG1, 6, 8, 9	Multipurpose I/O
DIG2-5	Multipurpose I/O Analog inputs
DIG7, 10, 11, 12, 13	Multipurpose I/O PWM output
PGC, PGD	Multipurpose I/O
3.3V	Power supply input
3.3VA	Analog reference output
GND	reference



- MCLR (1)
 - 3.3V (2)
 - GND (3)
 - PGD (4)
 - PGC (5)
- ICSP
- UART1_TX (2) 3.3VA
 - UART1_RX (4) DIG1
 - DIG3 (3) DIG2
 - DIG5 (6) DIG4
 - SDI (8) SCK
 - 3.3V (10) SDO
 - GND (12) DIG6
 - (13)
 - (14)

- nc (6)
 - UART2_TX (5)
 - UART2_RX (4)
 - nc (3)
 - nc (2)
 - GND (1)
- DIG7 (2) SDA
 - DIG8 (4) RTS
 - DIG9 (6) CTS
 - DIG10 (8) SCL
 - nCSEM (10) DIG11
 - 3.3V (12) DIG12
 - GND (13) DIG13
 - (14)